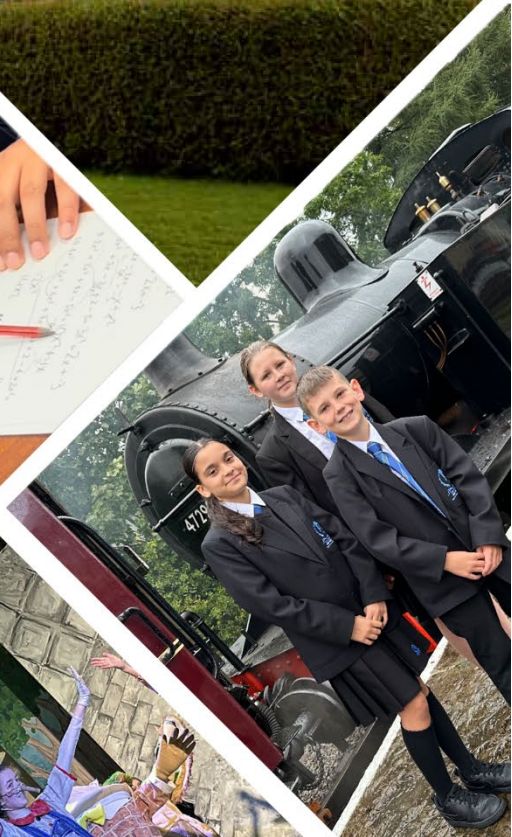
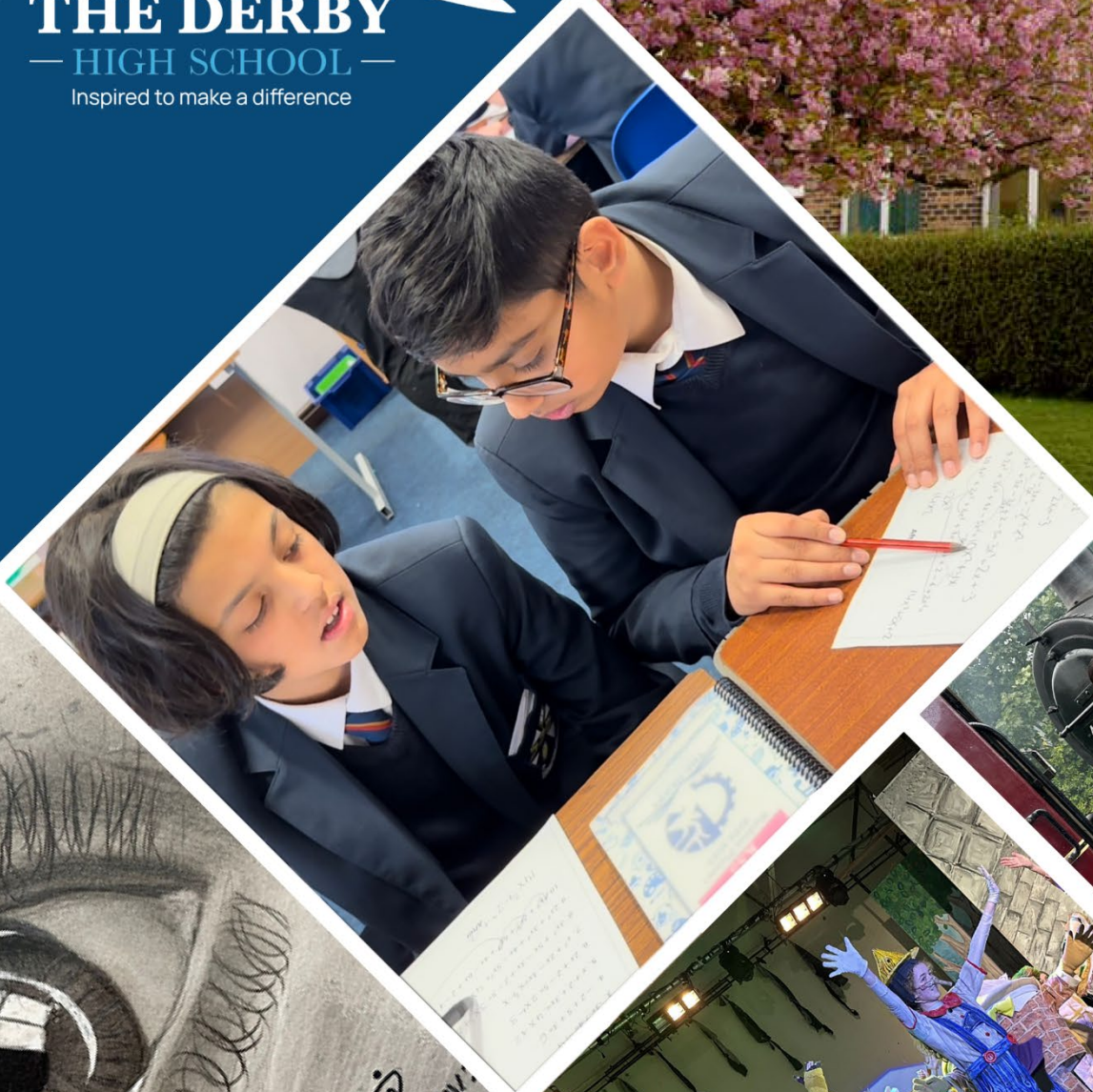




THE DERBY

— HIGH SCHOOL —

Inspired to make a difference





THE DERBY

— HIGH SCHOOL —

Inspired to make a difference

Welcome to Our School

Ofsted 2023 recognised that, “Pupils at The Derby High School are ‘Inspired to Make a Difference’.” This is a place where we truly impact on students’ lives.

We are a high achieving school providing exciting opportunities for all who belong here. Our high expectations alongside quality teaching and pastoral care lead to excellent outcomes for our students. We are currently the highest performing school in Bury for student progress and have held this position for many consecutive years (pre and post pandemic). Our success is testament to the talented, hardworking and dedicated staff we employ and the productive relationships we build with our parents/carers and our local community.

The Derby High School is truly a unique school. Positive relationships between and within staff and students is a key strength and ensure all who work here see school as a happy and caring place in which to learn. Furthermore, our distinctive curriculum (**The Resilience Curriculum**), ethos (**The 7Rs**) and enrichment offer (**The Derby Diploma**) enables our students to leave as confident, well rounded and forward-thinking young people, equipped to make an impact in their own and others’ lives.

I warmly invite you to come and see this for yourselves.

Ms C H Hubert, Headteacher



Ms C H Hubert,
Headteacher

Welcome to The Derby High School



Inspired to make a difference

At The Derby Our Vision is to inspire all who belong to our school community, so that our students are ready to make an impact on our world and lead successful, fulfilling and enjoyable lives.

RESILIENCE

We recognise the importance of feeling safe, secure and content. Through a strong focus on collaboration and resilience we provide valuable learning opportunities to bring our school together and develop the skills to thrive in life.

REASONABLE

We are highly inclusive and understand the needs, strengths and aspirations of all our students.

RESPONSIBLE

We address all gaps in learning, acknowledging that some may have resulted from disadvantages in life.

RIGHT IMPRESSION

We present a united front and work collectively to the benefit of our students, ensuring that we are always consistent in our approach.

RESOURCEFUL

We are a highly reflective and forward-thinking learning community delivering an exceptional curriculum through inspiring teaching and rich experiences and opportunities.

READY

We are ambitious for our students, showing a relentless determination to ensure that they achieve things they never thought possible.

RESPECTFUL

We build strong relationships through being honest and supportive and value all who belong to The Derby High School

We build strong relationships through being honest and supportive and value all who belong to The Derby High School.

R ESPECTFUL

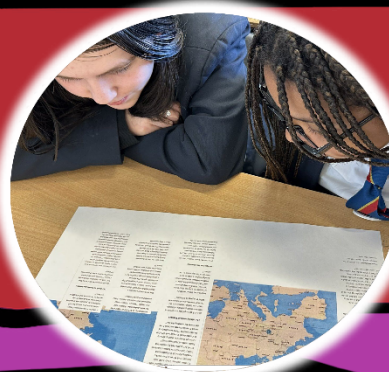


R ESPONSIBLE

We address all gaps in learning, acknowledging that some may have resulted from disadvantages in life.

We are highly inclusive and understand the needs, strengths and aspirations of all our students.

R EASONABLE

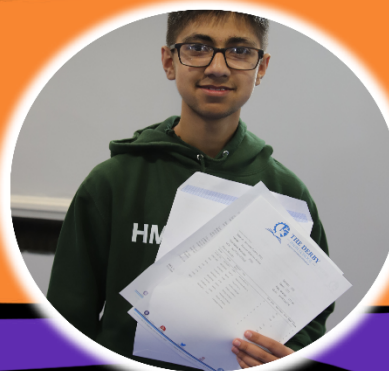


R EADY

We are ambitious for our students, showing a relentless determination to ensure that they achieve things they never thought possible

We are a highly reflective and forward-thinking learning community delivering an exceptional curriculum through inspiring teaching and rich experiences and opportunities

R ESOURCEFUL



R ESILIENT

We recognise the importance of feeling safe, secure and content. Through a strong focus on collaboration and resilience we provide valuable learning opportunities to bring our school together and develop the skills to thrive in life.

We present a united front and work collectively to the benefit of our students, ensuring that we are always consistent in our approach.

R IGH T IMPRESSION



From the

SENIOR TEAM

We would like to take this opportunity to introduce ourselves. We are Areeba and Isla; the proud Head Students of The Derby High School for 2023/24.

Our job this academic year is to support and serve our peers and the wider community.

We are part of the senior prefect team and in collaboration with the senior leadership team we are constantly looking at how we can improve the experiences and opportunities for our community. We will work tirelessly through student voice to give every student the opportunity to become the best version of themselves.

Speaking from experience, we can both say that The Derby High School has allowed us to flourish and thrive to become outgoing, mature and confident young people who believe that they can inspire all to make a difference in their community.



Isla Butterworth
Head Student

Areeba Malik
Head Student



2023



RESULTS

GCSE Attainment and Progress	The Derby High School Results 2023	National Picture 2023
Progress 8	0.41	0.01
Attainment 8	43.37	46.47
Progress English	0.63	0
Progress Maths	0.19	0
Progress Ebacc	0.31	0
Progress Open	0.58	0
Progress Disadvantaged Students	0.49	-0.41

THE SCHOOL DAY

THE SCHOOL DAY	
R Time	8:40 - 9:10 AM
Period 1	9:10-10:10 AM
Period 2	10:10 - 11:10 AM
Break	11:10 - 11:25 AM
Period 3	11:25 - 12:25 PM
Lunch	12:25 - 1:05 PM
Period 4	1:05 - 2:05 PM
Period 5	2:05 - 3:05 PM

INCLUSION

At The Derby High School all students are allocated to forms.

MY FORM CLASS

We do our best to make sure that each person joining The Derby High School in Year 7 is in a form with at least one familiar face from their primary school.

Each form meets together at the start of the school day for R-Time.

Once a week the forms meet as a Year Group for assembly (Year 7 assembly is on a Monday).

MY HEAD OF YEAR

Each year group has a named member of staff as their Head of Year. This person works hard to get to know every student in their year group. They lead assemblies, visit forms, and meet with parents. Where possible the Head of Year will follow the year group from Year 7 up to Year 9.

OTHER SUPPORT

All students have a non-teaching member of inclusion staff to support them during years 7-11 .

We also have a school therapist, wellbeing support staff and a number of agencies who provide support for young people during their time at The Derby High School.

ASSISTANT HEADTEACHER

An Assistant Headteacher also has responsibility for the successful transition of our Year 7 students.

DEPUTY HEADTEACHER

Mr. D White Deputy Headteacher for Behaviour and Learning and he is also the Designated Safeguarding Lead.

"Students are fully aware of the school's policy on the '7Rs' (respectful, responsible, reasonable, ready, resourceful, resilient and right impression). They understand the importance of these values when making choices about their behaviour". - Ofsted

CURRICULUM

Our curriculum is outstanding and provides a tremendous range of opportunities for our students.

At Key Stage 3 our students benefit from a wide variety of experiences. As well as the more traditional subjects, we believe the Creative Arts, sport and learning to cook help to make learning exciting and enjoyable. Languages, technology and computing also enable our students to enjoy a wide range of experiences.

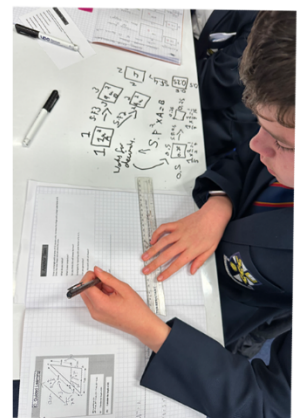
At Key Stage 4 students are offered many rigorous and challenging academic courses plus a range of exceptional vocational courses such as BTECs. A free choice of options is available to all our students.

Key Stage Three Curriculum (Years 7 – 9)

English, Mathematics, Science, Humanities – History, Geography, Religious Education, French, Art, R-Time
Drama, Food Studies, Dance, Design Technology, Music, PE and Computing.

Key Stage Four Curriculum (Years 10 – 11)

Core Curriculum – English, Mathematics, Science, PE.
Four Option Choices – Art, Business Studies, Dance, Drama, Food Studies, French, Geography, History, ICT, Music, PE, Religious Studies, Triple Sciences, Creative Digital Media, Photography, Computer Science, Health & Social Care & Engineering.



CURRICULUM OFFER

The Derby High School offers a knowledge-rich curriculum that celebrates the creative and vocational alongside the academic. We are proud of the breadth of our curriculum, including our offer of nine GCSEs featuring a vibrant range of subjects. Our unique Resilience Curriculum threads personal, social, health and economic life skills throughout every subject area. We provide culturally vibrant experiences and opportunities that ensure that our students are fully prepared for the world of work, ready to lead the way, shape the future and be inspired to make a difference.

Our curriculum is underpinned by ten core principles that we believe are crucial to students' personal development:

R = REAL WORLD

E = ENGAGING & ENRICHING

S = SKILLS FOR LIFE

I = INCLUSIVE

L = LEADERSHIP

I = INDEPENDENCE

E = ENCOURAGES REFLECTION

N = NEXT STEPS

C = CHALLENGE

E = ETHICS & EMPATHY

Ultimately, we want our students to enjoy their learning and leave feeling prepared to lead happy and fulfilling lives.

Uniform Standards



- Black Blazer with Derby High School badge. Alternatively, a badge can be purchased from Macron and sewn onto a black blazer.
- White shirt and School Tie.
- Black trousers. Not skintight or cropped. They should not be made of lycra or denim material and should be full length and not above the ankle. Leggings are not allowed.
- School skirt. As an alternative to wearing trousers a school skirt can be worn. These have The Derby High School logo and are available from the uniform suppliers. Girls must wear a Derby High School skirt if they want to choose the skirt option.
- V-neck black school pullover (optional for winter months with no logo or print). Practical outdoor coat or anorak. No fashion items including leather, denim or sweatshirts/hooded tops, bandanas or baseball caps. Outdoor clothing should not be worn when inside the school building.
- Shoes. Plain black practical leather (not canvas shoes or pumps, trainers/material sports shoes). Students wear their footwear five days a week. It is important that they are suitable and sturdy. No logos or brightly coloured laces. Fashion shoes e.g., high heels, open toes or slip-on shoes are not suitable. Boots or shoes above the ankle should not be worn if wearing a skirt.
- Tights/socks. Black tights or plain white or black socks between ankle and knee length. No patterned tights.
- Jewellery. No jewellery allowed with the exception of a wristwatch.
- No piercings are allowed. This includes ears, tongue, face etc. No 'clear' piercings are allowed.
- Make-up. No makeup allowed. No nail varnish/gel or false nails allowed. No false eyelashes.
- Hairstyles. Extreme hairstyles or unnatural colours are not permitted, including on hair extensions/weaves. Fully shaven heads or parts of heads/shaved patterns/ lines in hair or eyebrows are not permitted. If religious headwear is worn, it should be plain black or navy blue.

The Derby High School's central location makes it ideally situated for travel from any part of Bury, Radcliffe, Little Lever and even further afield.

Numerous bus routes pass right in front of the school gates or 200 yards away on Manchester/Bury Road.

Transport To And From Radcliffe

899 Morning Bus

The 899 bus starts at Starling, Black Bull and travels via Ainsworth Road, Starling Road, Ainsworth Arms/Higher Ainsworth Road, Turks Road, Countess Lane, Kilburn Road, Westminster Avenue, Coronation Road, Turks Road, Ainsworth Road, Water Street, Spring Lane, Bury Road, Radcliffe Road to The Derby High School.

899 Afternoon Bus

This afternoon bus will pick up from the stop outside school each day and travel: Radcliffe Road, The Derby High School, Manchester Road, Dumers Lane, Bury Street, Cross Lane, Spring Lane, Water Street, Ainsworth Road, Turks Road, Coronation Road, Westminster Avenue, Kilburn Road, Countess Lane, Turks Road, Higher Ainsworth Road/Ainsworth Arms, Starling Road to Starling Black Bull

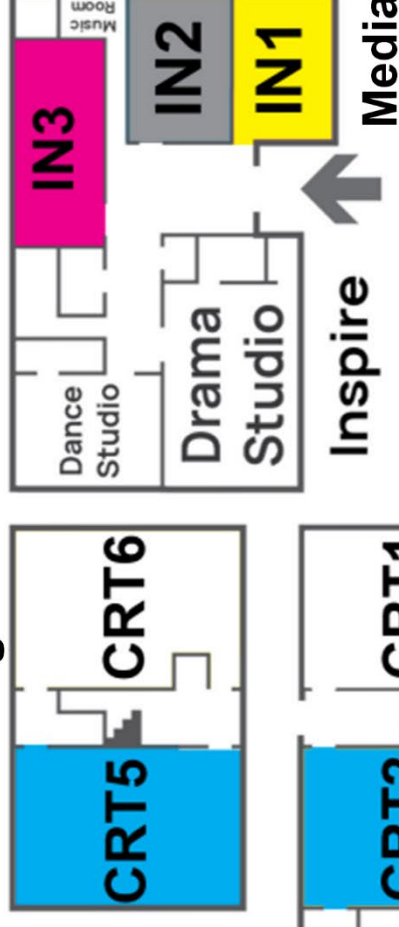
Transport To And From Walmersley And Bury

Students would need to change at Bury interchange for high frequency services to get to and from school. Unfortunately, there is no dedicated school bus.

School Plan

Technologies

Create (1st Floor)



Media

Gym

CRT2

CRT1

CRT3 CRT4 Create

The Hall

Cold Canteen

Foyer

Hot Canteen

Main Office

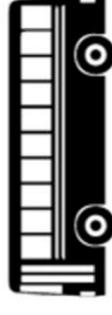
Reception

Deputy Head

Head-teacher

Staff Room

Sustain



IT &

Business Studies

ExcTe



Include

Art

Maths

'A' Corridor



A1

A2

A3

A4

A5

A6

A7

A8

A9

A10

A11

A12

A13

A14

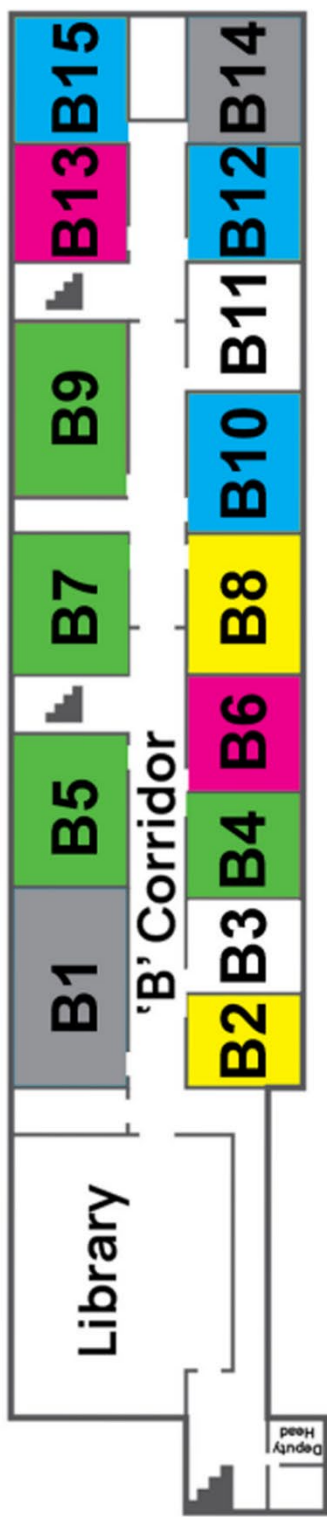
A15

A16

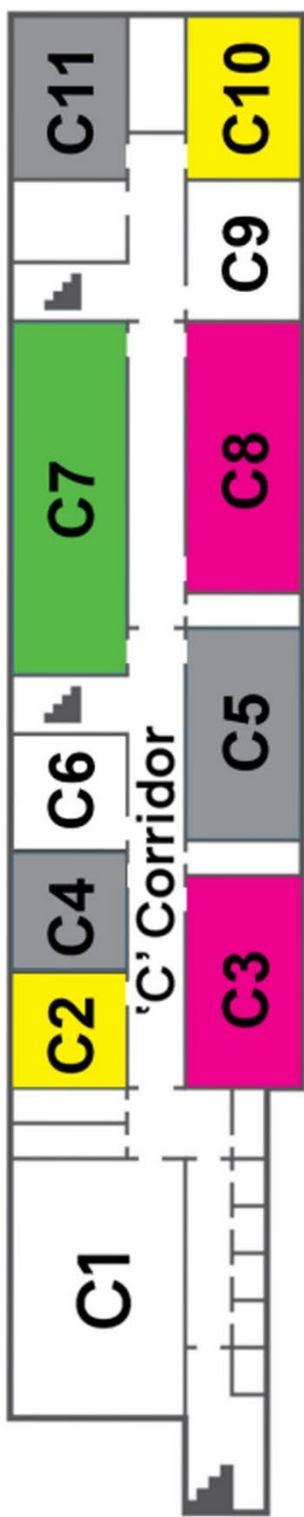
Form Room Key

Year 7
Year 8
Year 9
Year 10
Year 11

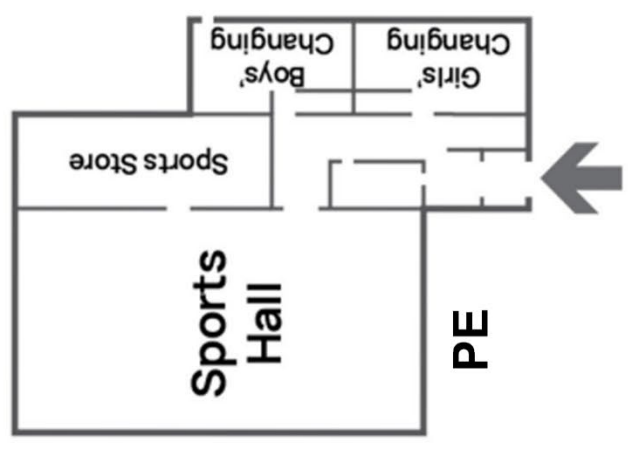
English Humanities



Thrive MFL Science



Discover



Sports Hall

Time	Monday	Tuesday	Wednesday	Thursday	Friday
8-8:30	Morning Sports Club Sports Leaders	Morning Sports Club Sports Leaders	Morning Sports Club Sports Leaders	Morning Sports Club Sports Leaders	Morning Sports Club Sports Leaders
8-8-30	Library drop in & Chess Club	Book Discussion Group Library	Library drop in & Chess Club	Library drop in & Chess Club	Library Assistant Team Meeting
8-8-30	Breakfast Homework Club A15	Breakfast Homework Club A15	Breakfast Homework Club A15	Breakfast Homework Club A15	Breakfast Homework Club A15
Lunch	The Ethos Charity Group SUSTAIN BUS	Year 11 Art Club Miss Livesley A10	Boys' Street Dance Miss Hall Dance Studio	Podcast Lunch Mr Parker	Mindfulness Meditation Miss Hetherington B7
Lunch	Debate Club Mrs Booth B3	Year 8 Art Club Mrs Barton A8	ETHOS Student Newspaper SUSTAIN BUS	Willow Project Student led Leigh-Oli SUSTAIN BUS	Year 8&9 Art Club Mrs Barton A8
Lunch	Girls'Football Sports Leaders Field	Dodgeball Club Sports Leaders field	Football for Fun Sports Leaders field	Basketball Sports Leaders Sports Hall	Football for Fun Sports Leaders field
Lunch	Puzzle Club Library Mrs Forkin	Spelling Bee Library Mrs Forkin	Quick fire Quizzers Library Mrs Forkin	Silent Reading Library Mrs Forkin	Chess Club Library Mrs Forkin
Lunch	Games Club Mrs Dean A15	Games Club Mrs Dean A15	Games Club Mrs Dean A15	Games Club Mrs Dean A15	Games Club Mrs Dean A15
Lunch		True Colours Miss Wright	Gardening and Nature Club Mrs Wright Well-Being Garden	Gardening and Nature Club Mrs Wright Well-Being Garden	Running Club Field PE Team
Lunch	Library Assistant Volunteer	Library Assistant Volunteer	Year 10 Art Club Mrs Barton A8	Drama Club Inspire Miss Hall & Miss Foster Drama Studio	Y11 Emotional Health & Well- Being Drop-In Mrs Wright's Office
Lunch	Young Carers' Club Mrs Wright's Office	Culture Club Laraib M Sustain Bus Week A	Library Assistant Volunteer	Library Assistant Volunteer	Library Assistant Volunteer
3:05pm	Concert Band Mr Ridgley Inspire Media 2	Languages Club MFL Team C2		Dungeons and Dragons Miss Booth SUSTAIN BUS	BTEC Dance & Drama Theory
3:05pm	Move It Monday Miss Hall Dance Studio	Inspire Choir Inspire Media 2 Mr Holt	Show Club Beauty & The Beast INSPIRE Arts Team	Making a Difference Through Discussion Mrs Charnock Room TBC	GCSE Music Inspire 3 Mr Holt & Mr Ridgley
3:05pm	Radio Ga Ga Mr White SUSTAIN BUS	Instrumental Club Inspire 3 Mr Ridgley	STEM Club Science Team DISCOVER	Homework & Silent Reading Library Mrs Forkin	BTEC Sports Theory A14
3:05pm	Deadlift Club Miss Leng Gym	Knitting Club A9 Mrs Dean & Miss Livesley	Photography Club Mr Kerr A12	Homework Club A15	Art - Year 11 Miss Livesley A10
3:05pm	Culture Club Mrs Davies A12	Boxing Club Mr Stephenson & Ayaan Z. Boys' Gym	Year 10 Art Club Art Team A10		Gardening and Nature Club Mrs Wright Well-Being Garden
3:05pm	Homework & Silent Reading Library Mrs Forkin	Homework & Silent Reading Library Mrs Forkin	Homework & Silent Reading Library Mrs Forkin		Homework & Silent Reading Library Mrs Forkin

Quality Teaching and Learning

"Teaching is engaging and inspirational at The Derby High School" Year 11 student. Our students tell us that our teachers are the best thing about this school. We are fortunate to have such a devoted and dedicated team of teachers who are always ready to go the extra mile for our students. All our teachers are well-qualified specialists with a real passion for their subject.

Outstanding achievement

We are a high achieving school. We have worked hard to get where we are. Year-on-year our examination results have improved. The progress students make is well above national expectations. Our progress score has been the best in the Bury Authority for many years.

Amazing Opportunities

We aim to provide a school experience that is truly memorable. We offer our students so many unique opportunities. Enrichment activities are an integral part of our school day. We believe that enrichment can extend the range of educational experiences for our students, broadening their horizons and helping them discover hidden talents by trying new things. We have built up a wide range of innovative partnerships. Every single day something exciting will be happening here at The Derby.

Strong Community

We are proud of the fact that our students work with us to create a harmonious, purposeful, and safe learning environment. The 7Rs underpin our ethos at The Derby. We provide encouragement and support with an extensive Inclusion team. All our students have opportunities to contribute to school life as leaders, buddies, mentors and prefects and our senior student leaders act as role models for younger students.

The Derby High has a proven record of success.

We are inspired to make a difference.

To find out more about our school please contact us on 0161 764 1819. We are always happy to arrange a visit and you are guaranteed a warm welcome.

X @DerbyHighBury

Radcliffe Road, Bury, Lancashire, BL9 9NH

Email: info@thederbyhighschool.co.uk